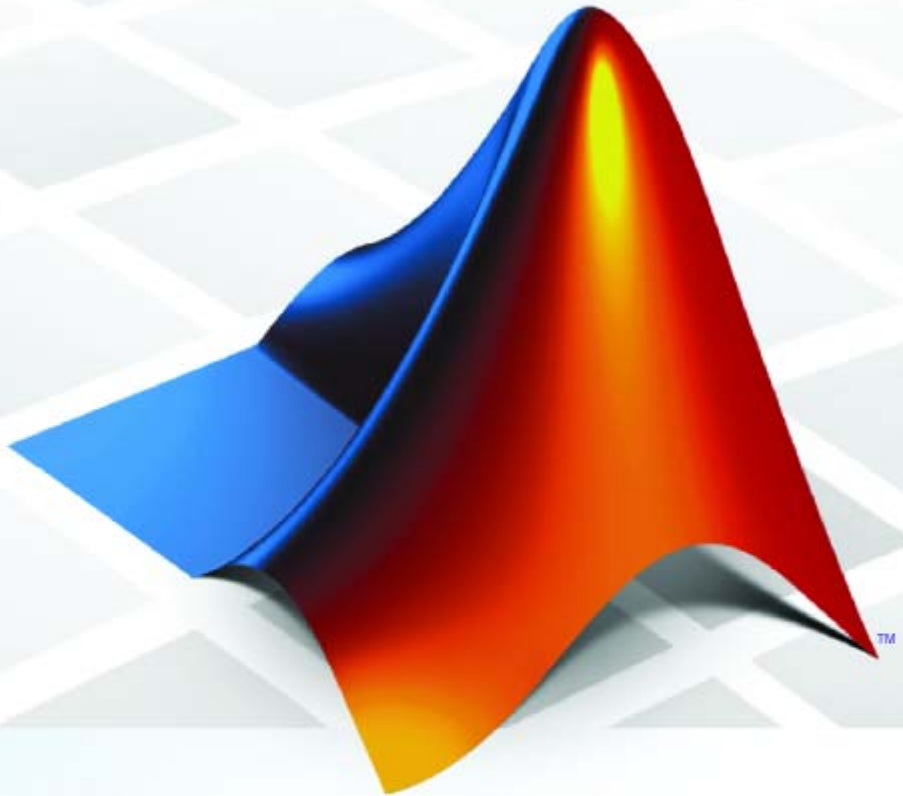


# PolySpace™ 5

## Installation Guide



## How to Contact The MathWorks



www.mathworks.com  
comp.soft-sys.matlab  
www.mathworks.com/contact\_TS.html

Web  
Newsgroup  
Technical Support



suggest@mathworks.com  
bugs@mathworks.com  
doc@mathworks.com  
service@mathworks.com  
info@mathworks.com

Product enhancement suggestions  
Bug reports  
Documentation error reports  
Order status, license renewals, passcodes  
Sales, pricing, and general information



508-647-7000 (Phone)



508-647-7001 (Fax)



The MathWorks, Inc.  
3 Apple Hill Drive  
Natick, MA 01760-2098

For contact information about worldwide offices, see the MathWorks Web site.

*PolySpace™ Installation Guide*

© COPYRIGHT 2007–2008 by The MathWorks, Inc.

The software described in this document is furnished under a license agreement. The software may be used by, for, or through the federal government of the United States. By accepting delivery of the Program or Documentation, the government hereby agrees that this software or documentation qualifies as commercial computer software or commercial computer software documentation as such terms are used or defined in FAR 12.212, DFARS Part 227.72, and DFARS 252.227-7014. Accordingly, the terms and conditions of this Agreement and only those rights specified in this Agreement, shall pertain to and govern the use, modification, reproduction, release, performance, display, and disclosure of the Program and Documentation by the federal government (or other entity acquiring for or through the federal government) and shall supersede any conflicting contractual terms or conditions. If this License fails to meet the government's needs or is inconsistent in any respect with federal procurement law, the government agrees to return the Program and Documentation, unused, to The MathWorks, Inc.

**FEDERAL ACQUISITION:** This provision applies to all acquisitions of the Program and Documentation by, for, or through the federal government of the United States. By accepting delivery of the Program or Documentation, the government hereby agrees that this software or documentation qualifies as commercial computer software or commercial computer software documentation as such terms are used or defined in FAR 12.212, DFARS Part 227.72, and DFARS 252.227-7014. Accordingly, the terms and conditions of this Agreement and only those rights specified in this Agreement, shall pertain to and govern the use, modification, reproduction, release, performance, display, and disclosure of the Program and Documentation by the federal government (or other entity acquiring for or through the federal government) and shall supersede any conflicting contractual terms or conditions. If this License fails to meet the government's needs or is inconsistent in any respect with federal procurement law, the government agrees to return the Program and Documentation, unused, to The MathWorks, Inc.

### Trademarks

MATLAB and Simulink are registered trademarks of The MathWorks, Inc. See [www.mathworks.com/trademarks](http://www.mathworks.com/trademarks) for a list of additional trademarks. Other product or brand names may be trademarks or registered trademarks of their respective holders.

### Patents

The MathWorks products are protected by one or more U.S. patents. Please see [www.mathworks.com/patents](http://www.mathworks.com/patents) for more information.

### Revision History

March 2008      First printing      New for Version 5.1 (Release 2008a)

## Before You Begin

### 1

<b>Hardware and Software Requirements</b> .....	<b>1-2</b>
PolySpace™ Product Requirements .....	<b>1-2</b>
PolySpace™ Plug-in Requirements .....	<b>1-3</b>
PolySpace™ Software License Requirements .....	<b>1-4</b>
UNIX®/Linux® Installation Requirements .....	<b>1-5</b>
PolySpace™ Documentation Requirements .....	<b>1-5</b>
<b>Timing Information</b> .....	<b>1-6</b>
<b>CD-ROM Contents</b> .....	<b>1-7</b>
<b>PolySpace™ Installation Options</b> .....	<b>1-10</b>
<b>PolySpace™ Software Installation Directories</b> .....	<b>1-12</b>

## Installing PolySpace™ Software

### 2

<b>Overview</b> .....	<b>2-2</b>
PolySpace Products .....	<b>2-2</b>
PolySpace™ Client Software .....	<b>2-2</b>
PolySpace™ Server Software .....	<b>2-2</b>
<b>Installing the PolySpace™ Software</b> .....	<b>2-4</b>
Before Starting the Installation .....	<b>2-4</b>
Installing the Software .....	<b>2-4</b>
Configuring the PolySpace™ Server Software .....	<b>2-11</b>
PolySpace™ Software Icons .....	<b>2-14</b>

<b>Launching the Installation Wizard in Batch Mode</b> . . . .	<b>2-15</b>
Installing Software on a UNIX® Platform . . . . .	<b>2-15</b>
Installing Software in Silent Mode . . . . .	<b>2-15</b>
<b>Configuring PolySpace™ Software</b> . . . . .	<b>2-17</b>
Configuring the PolySpace™ Client Software . . . . .	<b>2-17</b>
Configuring the PolySpace™ Server Software . . . . .	<b>2-19</b>

## **Installing PolySpace™ Model Link Products**

### **3**

<b>Installing PolySpace™ Model Link Products</b> . . . . .	<b>3-2</b>
<b>Upgrading MATLAB® Software</b> . . . . .	<b>3-5</b>
<b>Troubleshooting PolySpace™ Model Link™ SL</b>	
<b>Installation</b> . . . . .	<b>3-6</b>
MATLAB® Software is Not Installed Locally . . . . .	<b>3-6</b>
No Write Access to MATLAB® Product Root . . . . .	<b>3-7</b>

## **Installing PolySpace™ UML Link™ RH (C and C++ Only)**

### **4**

<b>Installing PolySpace™ UML Link™ RH Product</b> . . . . .	<b>4-2</b>
---	------------

## **Upgrading PolySpace™ Software**

### **5**

<b>Upgrading PolySpace™ Client Products</b> . . . . .	<b>5-2</b>
<b>Upgrading PolySpace™ Server Products</b> . . . . .	<b>5-4</b>

Overview .....	5-4
Upgrading an Active Server .....	5-4
Upgrading an Inactive Server .....	5-4

## **Installing PolySpace™ C++ addin for Visual Studio®**

### **6**

<b>Installing PolySpace™ C++ addin for Visual Studio® ..</b>	<b>6-2</b>
--	------------

## **Uninstalling PolySpace™ Products**

### **7**

<b>Uninstalling on Windows® Platforms .....</b>	<b>7-2</b>
Uninstalling the PolySpace™ Software .....	7-2
Uninstalling Shared Components .....	7-2
<b>Uninstalling on Linux® or UNIX® Platforms .....</b>	<b>7-4</b>
Uninstalling the PolySpace™ Software .....	7-4
Uninstalling Shared Components .....	7-4

## **Index**



# Before You Begin

---

Hardware and Software Requirements (p. 1-2)	Describes requirements to consider before beginning the installation
Timing Information (p. 1-6)	Describes how long it takes to perform the installation
CD-ROM Contents (p. 1-7)	Describes the contents of the installation CD
PolySpace™ Installation Options (p. 1-10)	Describes the PolySpace™ Client/Server architecture and installation options
PolySpace™ Software Installation Directories (p. 1-12)	Describes the three directories created during installation

## Hardware and Software Requirements

In this section...
“PolySpace™ Product Requirements” on page 1-2
“PolySpace™ Plug-in Requirements” on page 1-3
“PolySpace™ Software License Requirements” on page 1-4
“UNIX®/Linux® Installation Requirements” on page 1-5
“PolySpace™ Documentation Requirements” on page 1-5

### PolySpace™ Product Requirements

Please check that the following requirements are met before installing PolySpace™ software on a server or on a development workstation (Client usage).

	PolySpace Client	PolySpace Server
<b>Operating System</b>	<ul style="list-style-type: none"> <li>• <b>Linux</b> — RedHat Enterprise Linux® Workstation 3 (32 Bits release) or 4 (32/64 Bits), Suse Linux 10.0 (32 Bits) or 10.1 (32 Bits).</li> <li>• <b>Windows</b> — Windows® 2000 (SP4), or Windows XP (SP2–32/64 Bits).</li> <li>• <b>Solaris</b> — Solaris™ 2.8 or 2.10.</li> </ul>	
<b>RAM</b>	Minimum: 400 MB Recommended: 512 MB	Minimum: 1.5 GB ECC Recommended: 2 GB ECC
<b>Processor</b>	Minimum: 400 MHz Recommended: 1 GHz	Minimum: 1.5 GHz Recommended: 3 GHz



<b>Swap</b>	Swap space should be at least twice the RAM size.	
<b>Free hard drive space</b>	Minimum: 2 GB	Minimum: 2 GB (SCSI recommended)

**Note** The Mathworks recommends using a Linux PC.

## PolySpace™ Plug-in Requirements

Please check that the following requirements are met before installing PolySpace Model Link™ SL, PolySpace Model Link TL, PolySpace UML Link™ RH, and PolySpace C++ add-in for Visual Studio® software.

<b>Product</b>	<b>Plug-in Software</b>	<b>Release</b>	<b>Operating System</b>
<b>PolySpace Model Link SL</b>	MATLAB®	R13 (SP2), 2007a, and R2008a	Windows
	Real-Time Workshop® Embedded Coder™	4.2.1, R2007a, and R2008a	Windows
<b>PolySpace Model Link TL</b>	MATLAB	R13 (SP2), 2007a, and R2008a	Windows
	TargetLink® (dSPACE®)	2.1 and 2.2	Windows
<b>PolySpace UML Link RH (C and C++ only)</b>	Rhapsody® (Telelogic®)	7.0 and 7.1	Windows

<b>PolySpace C++ addin for Visual Studio (C++ only)</b>	Microsoft® Visual Studio .NET 2003	7.1	Windows
	Microsoft Visual Studio 2005	8.0	Windows

## **PolySpace™ Software License Requirements**

PolySpace software provides several licensing options, which when combined with the supported installation types, provide a wide range of asset mobility. Asset mobility, as used here, means the ease with which product licenses can be redeployed to different users.

PolySpace software provides the following license options:

<b>License Option</b>	<b>Protection</b>	<b>Description</b>
<b>Individual</b>	Designed computer (MAC address) or serial disk number.	You are an end user and you want to operate, install, and administer the software yourself. On a Desktop PC, an individual license is given in a text file.
<b>Concurrent</b>	Designed computer (MAC address) or serial disk number.	Your organization is standardized on the FLEXnet® licenses manager, or you need to impose strict limits on software use for accounting or license management purposes. This kind of license needs a FLEXnet manager.

---

**Note** See the PolySpace License guide. In particular, it describes the install of the FLEXnet licenses manager.

---

## UNIX®/Linux® Installation Requirements

### Configuration

Ensure that the /tmp folder contains at least 10 MB of free space.

### Environment Settings

- User's path must include *PolySpaceInstallDir/bin* (to launch the product without using the absolute path).
- The PolySpace license file needs to be placed in *PolySpaceInstallCommon/etc/license.dat*.
- PolySpace Graphical User Interfaces require **CDE** Window manager on Solaris Open Software environment and **Gnome** on Linux. Behavior on other Window managers is not guaranteed.

See “PolySpace™ Software Installation Directories” on page 1-12 for an explanation of the PolySpace installation directories.

### Access Rights

Read and Execution access rights are required for all the PolySpace installation.

## PolySpace™ Documentation Requirements

The PolySpace Documentation requires Adobe® Acrobat® Reader. If you do not have Acrobat Reader installed on your system, you can download it from [www.adobe.com](http://www.adobe.com).

---

**Note** The PolySpace Documentation requires Access™ Reader release 5.0 or later.

---

## **Timing Information**

The installation procedure lasts about 5 minutes (PolySpace™ install).

## CD-ROM Contents

Depending on the products you purchased, the PolySpace™ CD-ROM allows you to install one or more of the available PolySpace products:

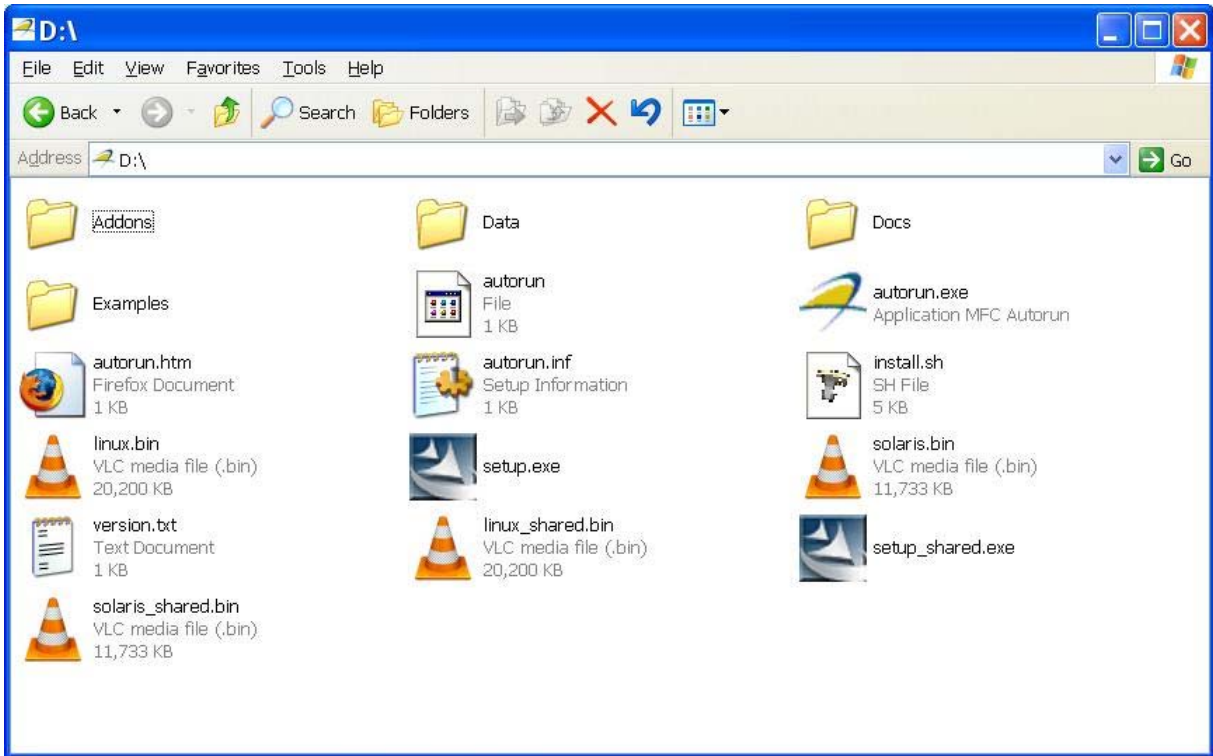
- **PolySpace™ Client™ for C/C++** — Allows analyzing and reviewing C and C++ source code.
- **PolySpace™ Server™ for C/C++** — Allows analyzing C and C++ source code on a dedicated server.
- **PolySpace Client for Ada** — Allows analyzing and reviewing Ada83 and Ada95 source code.
- **PolySpace Server for Ada** — Allows analyzing Ada83 and Ada95 source code on a dedicated server.
- **PolySpace Model Link™ SL** — Allows analyzing and review C source code generated using Real-Time Workshop® Embedded Coder™ software from a Simulink® model.
- **PolySpace Model Link TL** — Allows analyzing and review C source code generated using TargetLink® code generator from a Simulink model.
- **PolySpace UML Link™ RH** — Allows analyzing and reviewing C and C++ source code generated from Rhapsody® suit.

---

**Note** The difference between PolySpace Server and PolySpace Client is described in “PolySpace™ Installation Options” on page 1-10.

---

The CD-ROM contains 4 subfolders and program files, as shown in the figure below.



Important subfolders and programs are described below:

- Setup.exe and setup\_shared.exe run the Graphical Install Wizard on a Windows® platform. Shared install is dedicated to PolySpace shared components.
- install.sh runs the shell script Install Wizard on a UNIX® platform. The -console option enables you to execute the command in a console mode. Running install.sh -h gives option and usages.
- solaris.bin and solaris\_shared.bin runs the Graphical install Wizard on a Solaris™ platform. Shared install is dedicated to PolySpace shared components.
- linux.bin and linux\_shared.bin run the Graphical install Wizard on a Linux® platform. Shared install is dedicated to PolySpace shared components.

- `version.txt` contains the complete version number of the PolySpace product that has been burnt on the CD-ROM.
- The Addons subfolder contains some useful free or under GPL license tools, available for Windows and / or UNIX platforms.
- The Docs subfolder contains all the documentation associated to PolySpace products, in HTML and PDF formats.

---

**Note** The PolySpace License Installation Guide is located in this subfolder. It describes installation and available license protection mechanisms.

---

- The Data subfolder contains PolySpace data.
- The Examples subfolder contains some results of verification made with PolySpace tools (using PolySpace Client, Server and Model Link for each language). These results can be displayed with The PolySpace Viewer available with any of the PolySpace products.

---

**Note** Please refer to the Getting Started Guide for a quick description of The PolySpace suit associated to a particular language.

---

## **PolySpace™ Installation Options**

The PolySpace™ Installation CD allows you to install one of the following products:

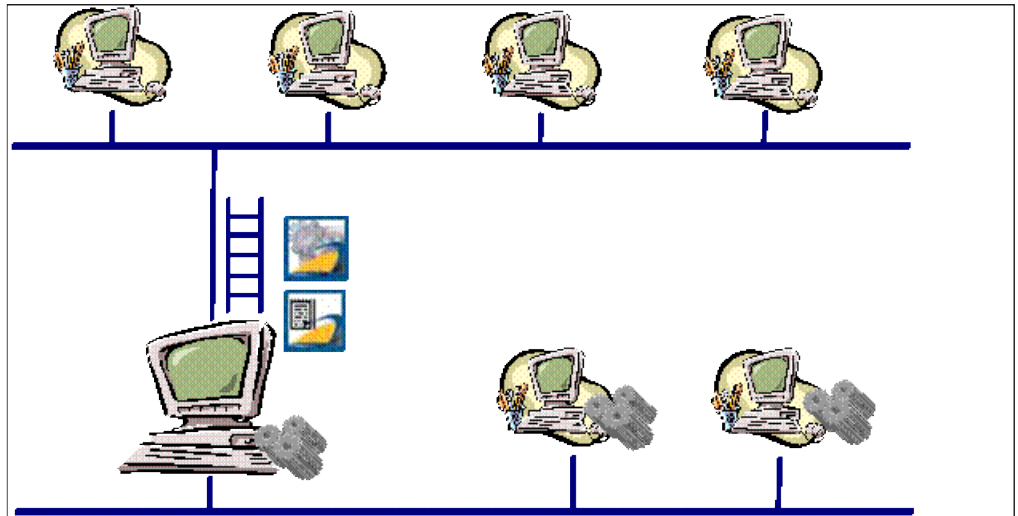
- PolySpace™ Client™ for C/C++ (or PolySpace Client for Ada)
- PolySpace™ Server™ for C/C++ (or PolySpace Server for Ada)

A *Client* installation is recommended if you are on a client computer. It allows you to perform local verification, review previously completed analyses, and send new analyses to a dedicated server. This option is appropriate for developer workstations. The installation requires approximately 300 to 500 MB of disk space. You must have local administrator rights and have access to the registry in order to complete the installation.

A *Server* installation is recommended when the machine is dedicated to PolySpace software, and will receive verifications coming from Clients. This option is also recommended for CPUs. The installation requires approximately 300 to 500 MB of disk space. You must use a local user login with local administrator rights to complete the installation.

A PolySpace Server can receive PolySpace verification requests from any number of PolySpace Clients.





### **PolySpace™ Client/Server Architecture**

Terminology:

- The PolySpace Clients are computers asking for PolySpace analyses to be performed on CPUs.
- A PolySpace Server which only analyses source code coming from N Clients is named a CPU.
- A PolySpace Server which manages the analyses coming from N clients is also named the Queue Manager (QM). Note that it can be configured to be only a dispatcher of analyses only
- The PolySpace Server sends verifications to N CPUs, the computers that run the analyses. It can also be configured as a CPU as well.

The PolySpace Client, The PolySpace Server, the queuing mechanism (Remote Launcher) and CPUs will refer to this architecture throughout this installation guide.

## **PolySpace™ Software Installation Directories**

Three directories are required to install PolySpace™ software:

- The principal directory contains the kernel of the installed PolySpace release. The default directory is `C:\PolySpace\PolySpaceForLanguage`, where *language* can be either `CandCPP` or `Ada`.
- A common components directory contains the shared components available for any language, such as the java run time library, the PolySpace Viewer, the Remote Launcher (RL), and any add-ins (such as the PolySpace C++ addin for Visual and the PolySpace In One Click Toolbar (POC)). The default directory is `C:\PolySpace\PolySpace_Common`.
- A directory contains the Remote Launcher configuration file `polyspace.conf`. The directory is `C:\PolySpace\PolySpace_RLDatas`.

In this document, these three directories are referred to as follows:

- *PolySpaceInstallDir* refers to `C:\PolySpace\PolySpaceForLanguage` (`/usr/local/PolySpace/PolySpaceForLanguage` for UNIX® systems),
- *PolySpaceInstallCommon* refers to `C:\PolySpace\PolySpace_Common` (`/usr/local/PolySpace/PolySpace_Common` for UNIX systems).
- *PolySpaceRLDdatas* refers to `C:\PolySpace\PolySpace_RLDatas` (`/etc/PolySpace` for UNIX systems).

# Installing PolySpace™ Software

---

Overview (p. 2-2)

Describes the PolySpace™ Client and Server software

Installing the PolySpace™ Software (p. 2-4)

Describes how to install the PolySpace client and server software

Launching the Installation Wizard in Batch Mode (p. 2-15)

Describes how to install the software using silent mode

Configuring PolySpace™ Software (p. 2-17)

Describes how to configure the PolySpace software after installation

# Overview

In this section...
“PolySpace Products” on page 2-2
“PolySpace™ Client Software” on page 2-2
“PolySpace™ Server Software” on page 2-2

## PolySpace Products

This chapter describes how to install and configure the following PolySpace products:

- PolySpace™ Client™ for Ada
- PolySpace™ Server™ for Ada
- PolySpace Client for C/C++
- PolySpace Server for C/C++

## PolySpace™ Client Software

PolySpace™ Client software is the management and visualization tool of PolySpace products. You use it to submit jobs for execution by PolySpace Server, and to review verification results. The PolySpace Client software includes the Viewer, DRS/MISRA C® Checker, Report Generator, and Automatic Orange Tester features.

You should install the PolySpace Client software on developer workstations that will send verification jobs to the PolySpace Server.

The installation requires approximately 300 to 500 MB of disk space.

## PolySpace™ Server Software

PolySpace Server software is the computational engine of PolySpace products. You use it to run jobs posted by PolySpace Clients, and to manage multiple servers and queues. The PolySpace Server software includes the Remote Launcher, Report Generator, DRS/MISRA C Checker, and HTML Generator features.

You should install the PolySpace Server software on machines dedicated to PolySpace software that will receive verifications coming from Clients, and on CPUs.

The installation requires approximately 300 to 500 MB of disk space.

# Installing the PolySpace™ Software

In this section...
“Before Starting the Installation” on page 2-4
“Installing the Software” on page 2-4
“Configuring the PolySpace™ Server Software” on page 2-11
“PolySpace™ Software Icons” on page 2-14

## Before Starting the Installation

Before starting the installation process, ensure that you have the following:

- The PolySpace™ CD-ROM.
- A `license.dat` file accessible on the disk.
- A local user login with **administrator** rights.
- At least 500 MB of free disk space.

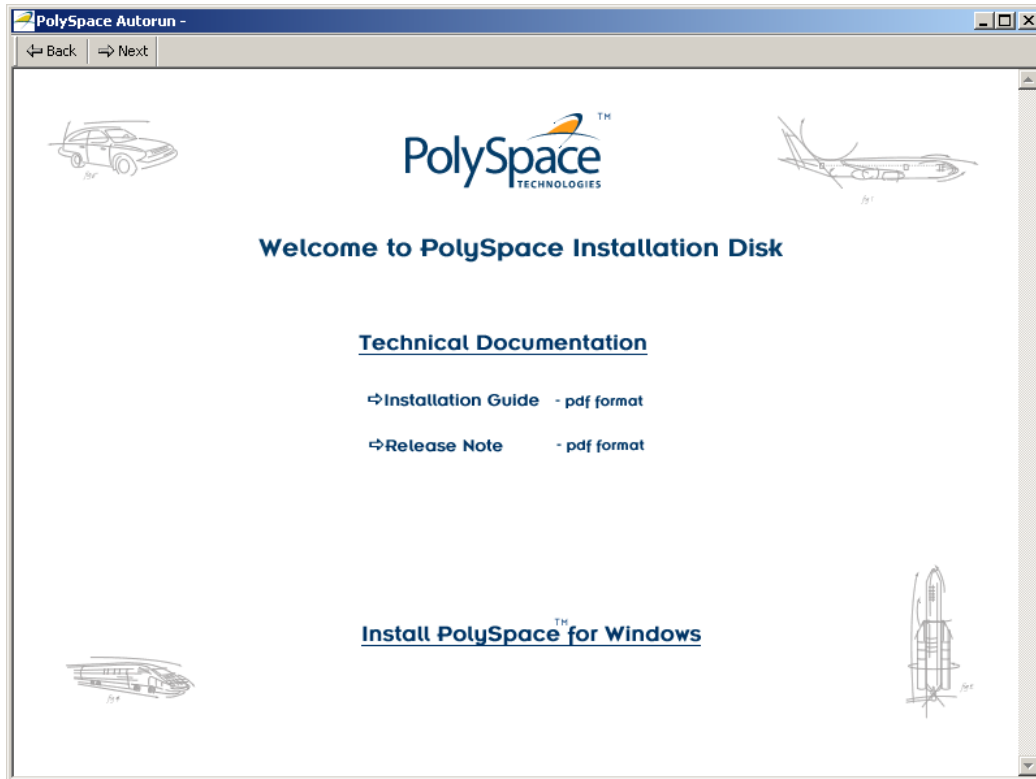
## Installing the Software

PolySpace software provides a Graphical Installation Wizard that guides you through the installation process. This Wizard is available on Solaris™, Linux® or Windows® platforms. This section describes only a complete Windows install.

To install the PolySpace software:

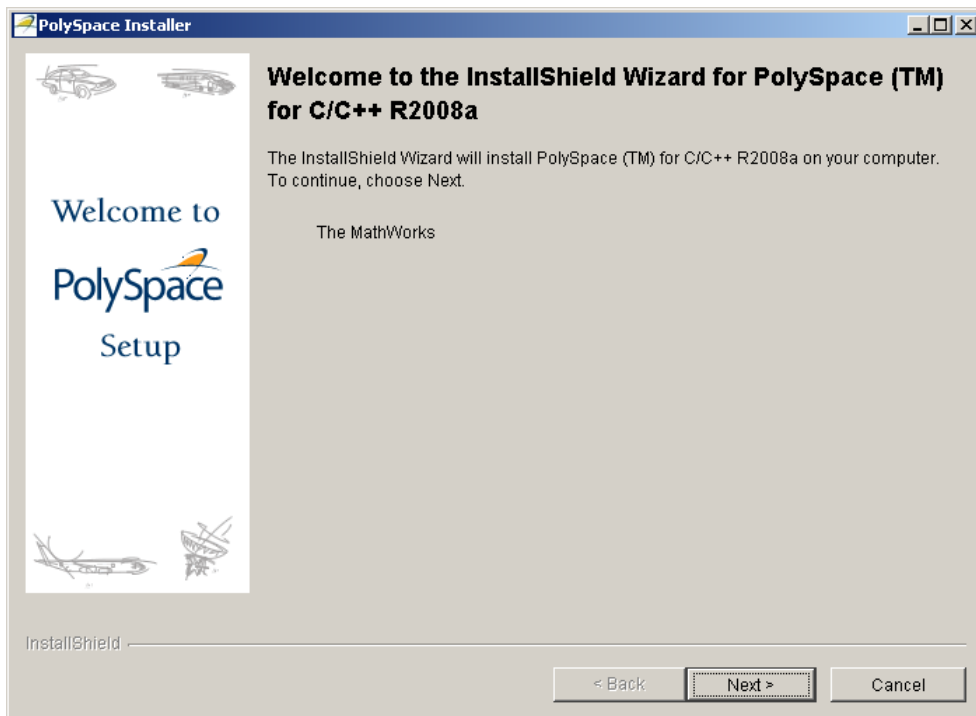
- 1 Insert the PolySpace CD-ROM into your CD-ROM drive.

The PolySpace autorun starts. If no autorun starts after a couple of minutes, you can launch the `setup.exe` program which is located on the CD drive.



## 2 Click **Install PolySpace for Windows**.

The InstallShield Wizard runs, preparing the Java™ Virtual Machine. This can take between 3 and 5 minutes depending on your computer.



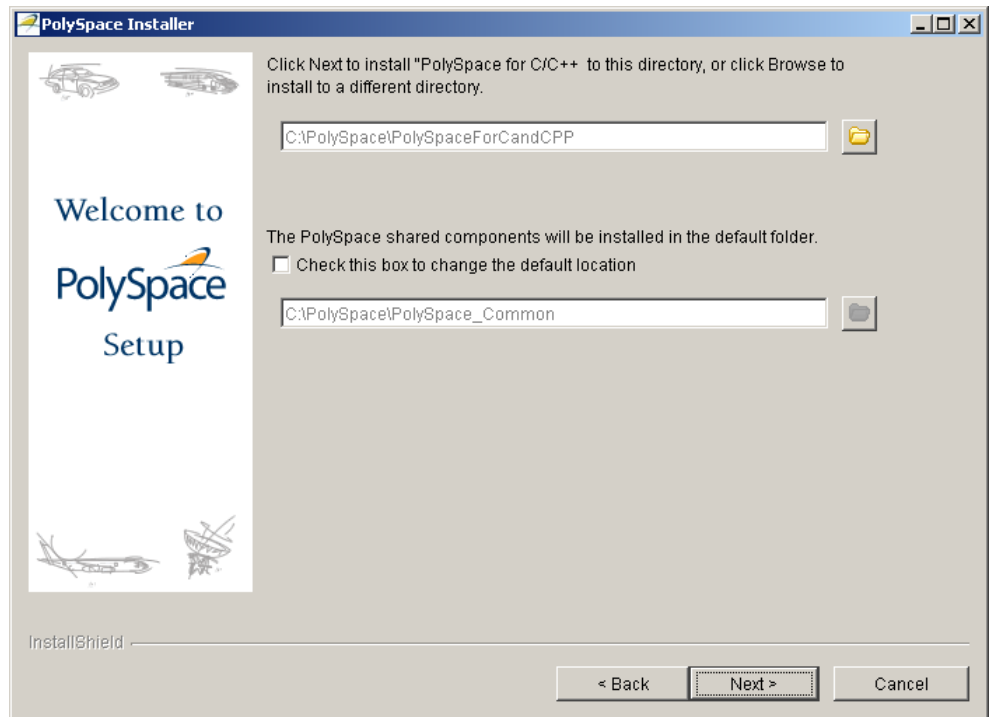
**3** When the PolySpace Installer appears, click **Next**.

The Software License agreement appears

**4** Select **I accept the terms of the license agreement**, then click **Next**.

The directory selection screen appears.





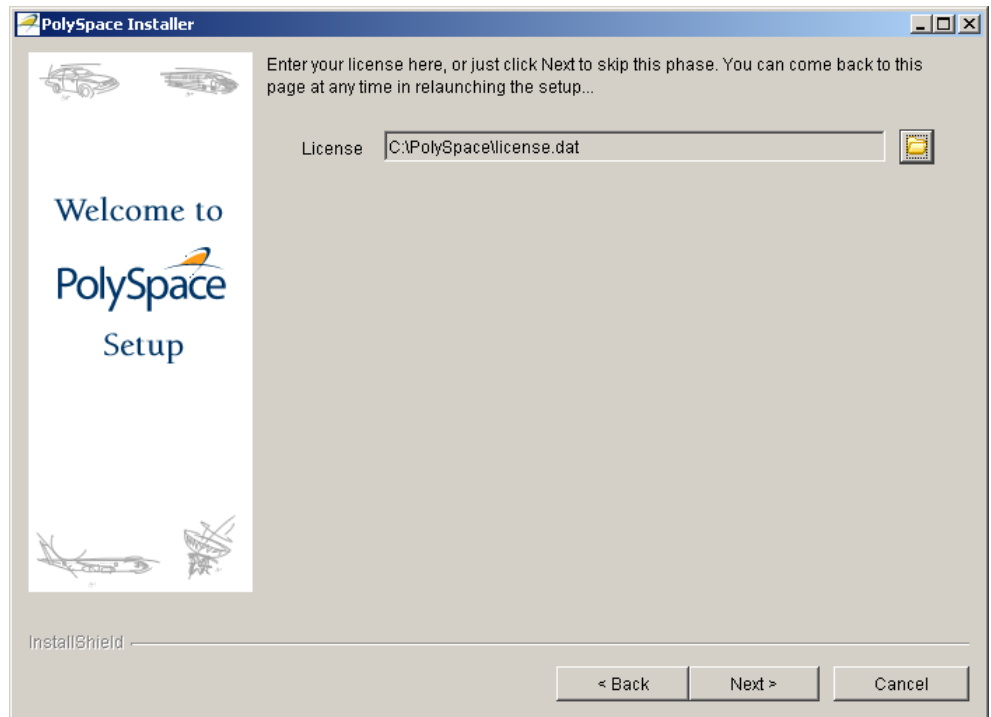
- 5 Select the directories in which to install the PolySpace software and shared components, then click **Next**.

---

**Note** The default directory for the product software is  
C:\PolySpace\PolySpaceFor*language* where *language* can be either  
CandCPP or Ada.  
The default directory for shared components is  
C:\PolySpace\PolySpace\_Common.

---

The License window appears.



- 6 Click **Browse**, then select your `license.dat` file. Refer to the *PolySpace License Installation Guide* for more information about licensing.

---

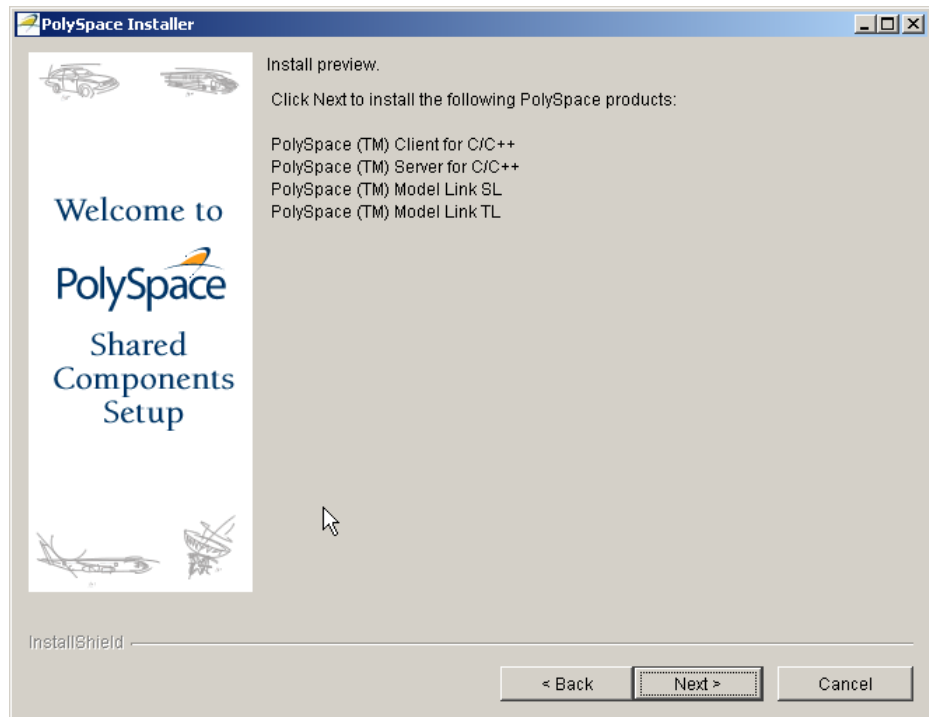
**Note** If you do not have your license file, you can click **Next** to skip this step without selecting a license file. You can then install the license file later.

On Windows, the license file location depends on the License mechanism. By default, It must be located in *PolySpaceInstallCommon/etc*.

---

- 7 Click **Next**.

The Shared Components Setup wizard (a second installShield) opens.



**8 Click Next.**

The following things occur:

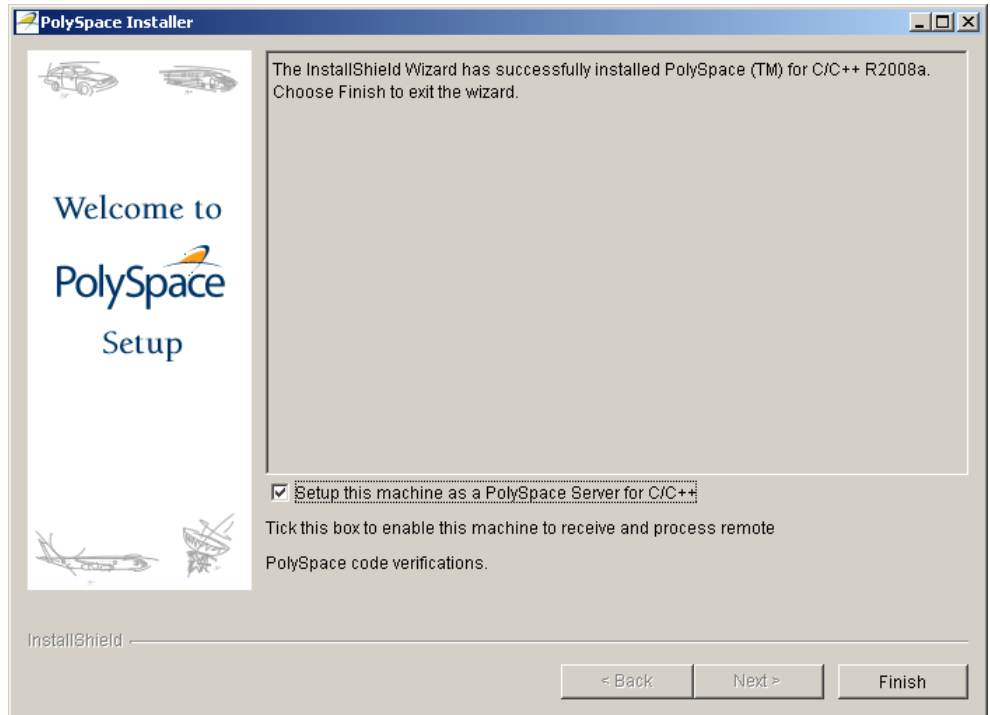
- The shared components are installed (this may take a few minutes).
- When shared component installation is complete, the Shared Components Setup wizard closes, and the product software is installed (this may take a few minutes).
- When software installation is complete, the Post installation operations window appears.

**9 Select any post-installation operations you want to complete:**

- Launch integrity check — Checks the integrity of the software installation.

**10 Click Next.**

The selected post-installation operations run, and the final setup screen appears.



**11** If you are installing a PolySpace client, click **Finish**.

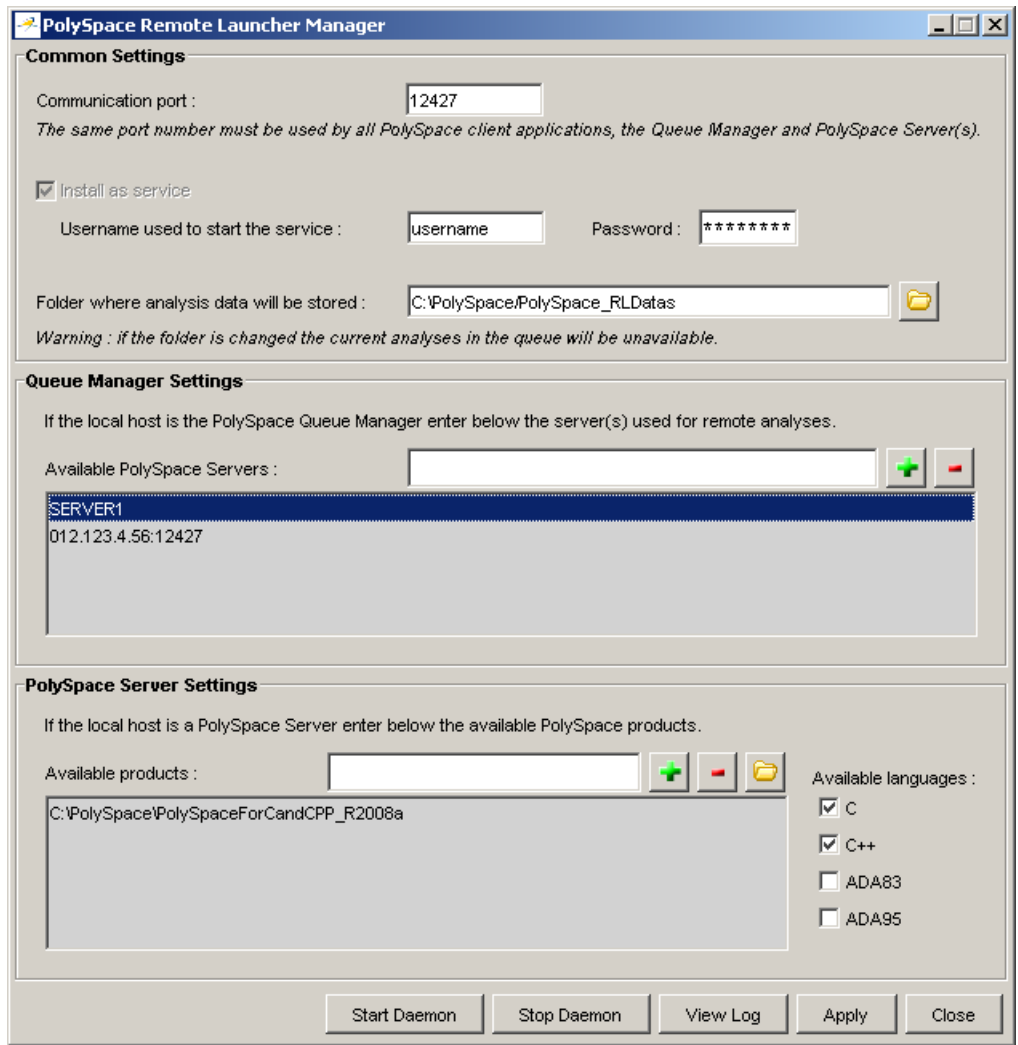
The PolySpace Client software installation is complete.

**12** If you are installing a PolySpace server, select **Setup this machine as a PolySpace Server**, then click **Finish**.

The PolySpace Remote Launcher Manager dialog box appears. Go to the next section, “Configuring the PolySpace™ Server Software” on page 2-11 for information on configuring the Remote Launcher.

## Configuring the PolySpace™ Server Software

When you finish installing the PolySpace Server software, the PolySpace Remote Launcher Manager dialog box appears. You must configure the port number for the PolySpace Server to complete the installation. Configuring the port number allows communication with the PolySpace Server to be established.



To complete the server installation:

- 1 Specify the port number on which the server will communicate with Clients. The default port number is 12427.

---

**Note** The port number must be the same as the port specified for all PolySpace Clients.

---

- 2 To install the server as a service on a Windows machine (or a daemon on a Linux or Solaris machine), select **Install server as service (daemon)**, then enter the username and password used to start the server as a service or daemon.

---

**Note** Password is not required on a Linux or Solaris machine.

---

---

**Note** If you do not select **Install server as service (daemon)**, you must configure the server manually after installation. See “Manual Configuration of the PolySpace™ Server” on page 2-22.

---

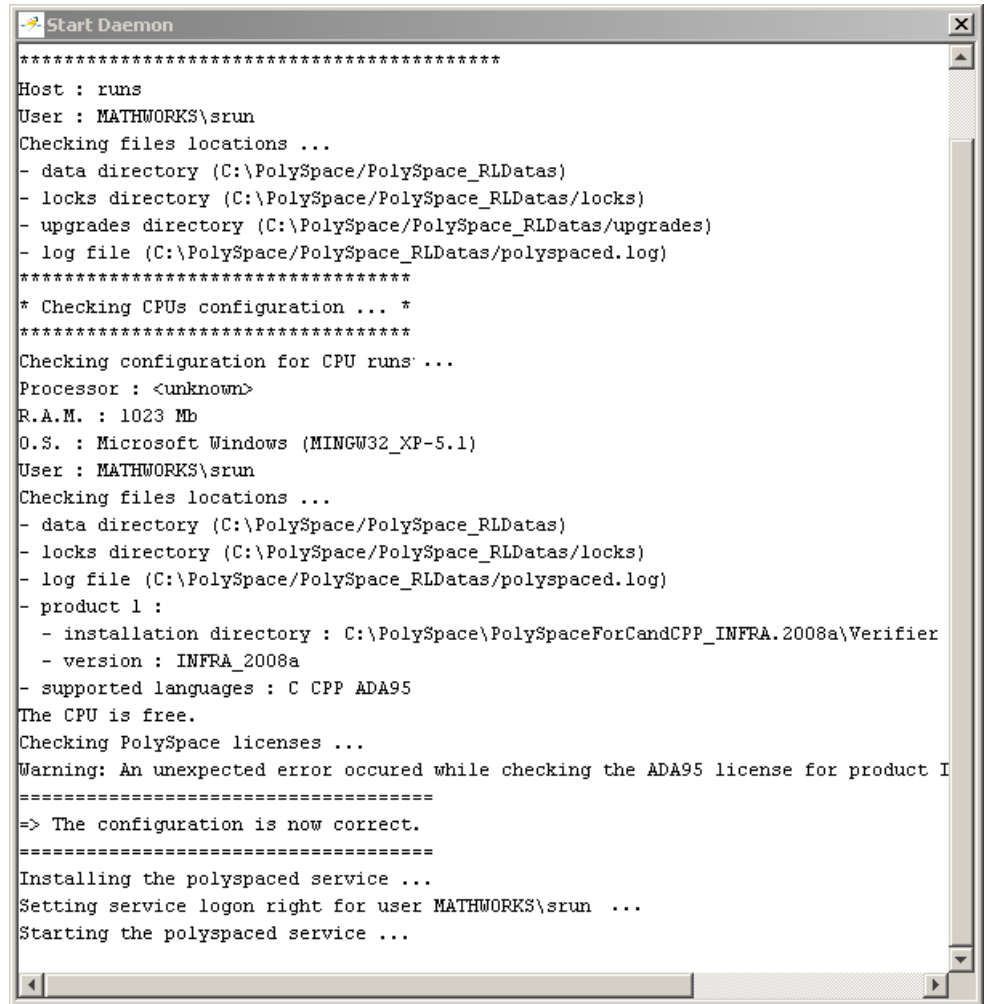
- 3 Click **Start Daemon**.

A message appears informing you that the configuration has been saved.

- 4 Click **Yes** to start the Daemon.

- 5 Click **Yes** to save your settings.

The Start Daemon log window appears.



```

*****
Host : runs
User : MATHWORKS\srurn
Checking files locations ...
- data directory (C:\PolySpace\PolySpace_RLDatas)
- locks directory (C:\PolySpace\PolySpace_RLDatas/locks)
- upgrades directory (C:\PolySpace\PolySpace_RLDatas/upgrades)
- log file (C:\PolySpace\PolySpace_RLDatas/polyspaced.log)
*****
* Checking CPUs configuration ... *
*****
Checking configuration for CPU runs: ...
Processor : <unknown>
R.A.M. : 1023 Mb
O.S. : Microsoft Windows (MINGW32_XP-5.1)
User : MATHWORKS\srurn
Checking files locations ...
- data directory (C:\PolySpace\PolySpace_RLDatas)
- locks directory (C:\PolySpace\PolySpace_RLDatas/locks)
- log file (C:\PolySpace\PolySpace_RLDatas/polyspaced.log)
- product 1 :
  - installation directory : C:\PolySpace\PolySpaceForCandCPP_INFRA.2008a\Verifier
  - version : INFRA_2008a
- supported languages : C CPP ADA95
The CPU is free.
Checking PolySpace licenses ...
Warning: An unexpected error occured while checking the ADA95 license for product I
=====
=> The configuration is now correct.
=====
Installing the polyspaced service ...
Setting service logon right for user MATHWORKS\srurn ...
Starting the polyspaced service ...

```

The Remote Launcher Manager checks product paths, licenses, and the creation and start up of the service (daemon). When the configuration check is complete, the message “Start of the daemon has succeeded.” appears.

---

**Note** If a problem occurs, an error message appears at the bottom of the screen. If you get an error, see “Troubleshooting Common Errors” on page 2-26.

---

**6** When the message “Start of the daemon has succeeded.” appears, click **OK**.

**7** Click **Close** to close the Remote Launcher Manager

The PolySpace Server installation is complete.

---

**Note** By default, the server becomes the first CPU of the architecture.

---

### PolySpace™ Software Icons

After Installation is complete, three new icons appear on your desktop:



- **PolySpace Launcher** — Performs single file or multi-file verification of source code and gives the location and status of run-time errors in those files.
- **PolySpace Viewer** — The graphical user interface to explore the results computed by PolySpace Client and PolySpace Server software.
- **PolySpace Spooler** — The graphical user interface to manage verifications sent in remote using PolySpace Client software.



## Launching the Installation Wizard in Batch Mode

In this section...
“Installing Software on a UNIX® Platform” on page 2-15
“Installing Software in Silent Mode” on page 2-15

### Installing Software on a UNIX® Platform

To install PolySpace™ products on a Linux® or UNIX® system, execute the following command in a terminal window:

```
CD-ROM/install.sh
```

This script launches a textual installation wizard. Refer to the “Installing the PolySpace™ Software” on page 2-4 to complete the installation.

---

**Note** If you are using the **Gnome** window manager in Linux or **CDE** window manager in Solaris™, you can click `Linux.bin` or `Solaris.bin` in the root of the CD-ROM path to use the graphical installation wizard.

---

### Installing Software in Silent Mode

By default, `-silent` mode performs a PolySpace software installation using default parameters (auto server mode and 12427 for the port).

#### UNIX® Platforms

To install the software on a UNIX system using silent mode, execute the following command in a terminal window:

```
CD-ROM/install.sh -silent -install-dir PolySpaceInstallDir
```

where *PolySpaceInstallDir* represents the installation directory.

The common components are automatically installed at the same level as the installation directory you choose, or in the existing *PolySpace\_Common* directory, if it exists.

### **Windows® Platforms**

To install the software on a Windows® system using silent mode, execute the following .bat file in a command prompt shell:

```
CD-ROM\DATA\Windows\setup_silent.bat PolySpaceInstallDir
```

The common components are automatically installed at the same level as the installation directory you choose, or in the existing *PolySpace\_Common* directory, if it exists.

# Configuring PolySpace™ Software

## In this section...

“Configuring the PolySpace™ Client Software” on page 2-17

“Configuring the PolySpace™ Server Software” on page 2-19

## Configuring the PolySpace™ Client Software

### Initial Configuration

By default, the PolySpace™ Client is configured to automatically detect a PolySpace Server on the network using port 12427.

### Manually Configuring the PolySpace™ Client

By default, the PolySpace Client automatically detects any available PolySpace Server configured as a Queue Manager on the network. However:

- If the client finds more than one PolySpace Server, it displays an error message listing the names of all detected servers. Carefully note all names and acknowledge the error dialog box.
- If no PolySpace Server is available, an error message appears when you launch an verification or execute any PolySpace command. The error message is the following: “No QueueManager server found”.

In these cases, it is possible to specify a specific Queue Manager server associated to a specific port number.

To manually configure the remote server:

- 1 Double-click the **PolySpace Launcher** icon on your desktop.

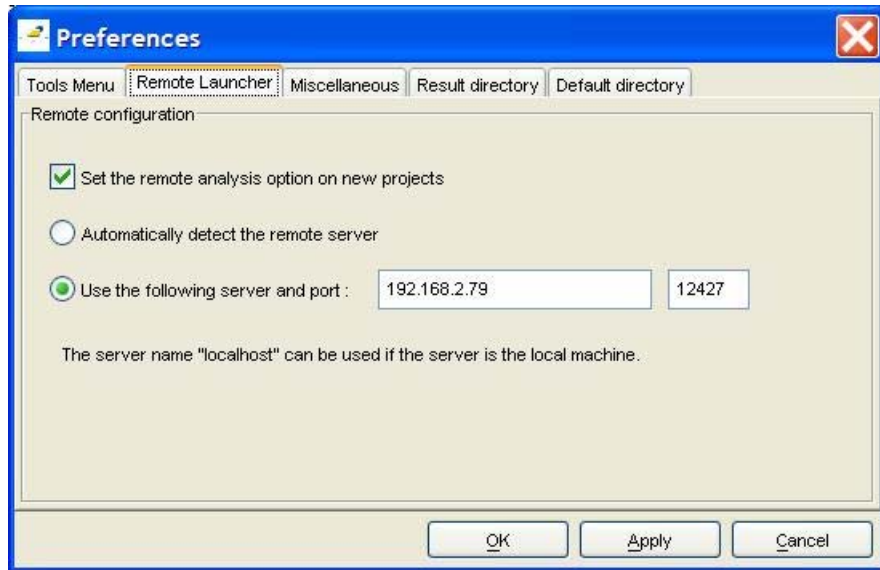


---

**Note** On UNIX®, enter the command  
*InstallPolySpaceDir/bin/polyspace-launcher.*

---

- 2 Select **Edit > Preferences**. The Preferences dialog box appears.



- 3 Select the **Remote Launcher** tab.
- 4 Select the **Use the following server and port** radio button.
- 5 Enter an IP address (or server name) and associated port number for the PolySpace Server.
- 6 Click **OK**.

The preferences are stored in the PolySpace-Launcher.prf preferences file in *user home directory/.rte* directory (C:\Documents and Settings\*user name*\.rte on a Windows® system).

---

**Note** You can modify the file with an ASCII editor, but you should always use the graphical user interface.

---

## Configuring the PolySpace™ Server Software

- “Initial Configuration” on page 2-19
- “Graphical Configuration of the PolySpace™ Server” on page 2-19
- “Manual Configuration of the PolySpace™ Server” on page 2-22
- “Configuration File and Directory” on page 2-24
- “Installing a New CPU” on page 2-26
- “Troubleshooting Common Errors” on page 2-26

### Initial Configuration

You perform initial configuration of the PolySpace server software during installation (see “Configuring the PolySpace™ Server Software” on page 2-11).

After installation, the PolySpace Server becomes the first CPU of the architecture by default.

---

**Note** All the information displayed in the Remote Launcher configuration window during installation is automatically saved as ASCII text in the file *PolySpaceInstallCommon/.. /PolySpace\_RLData/polyspaced.log(/var/PolySpace/polyspaced.log file in UNIX).*

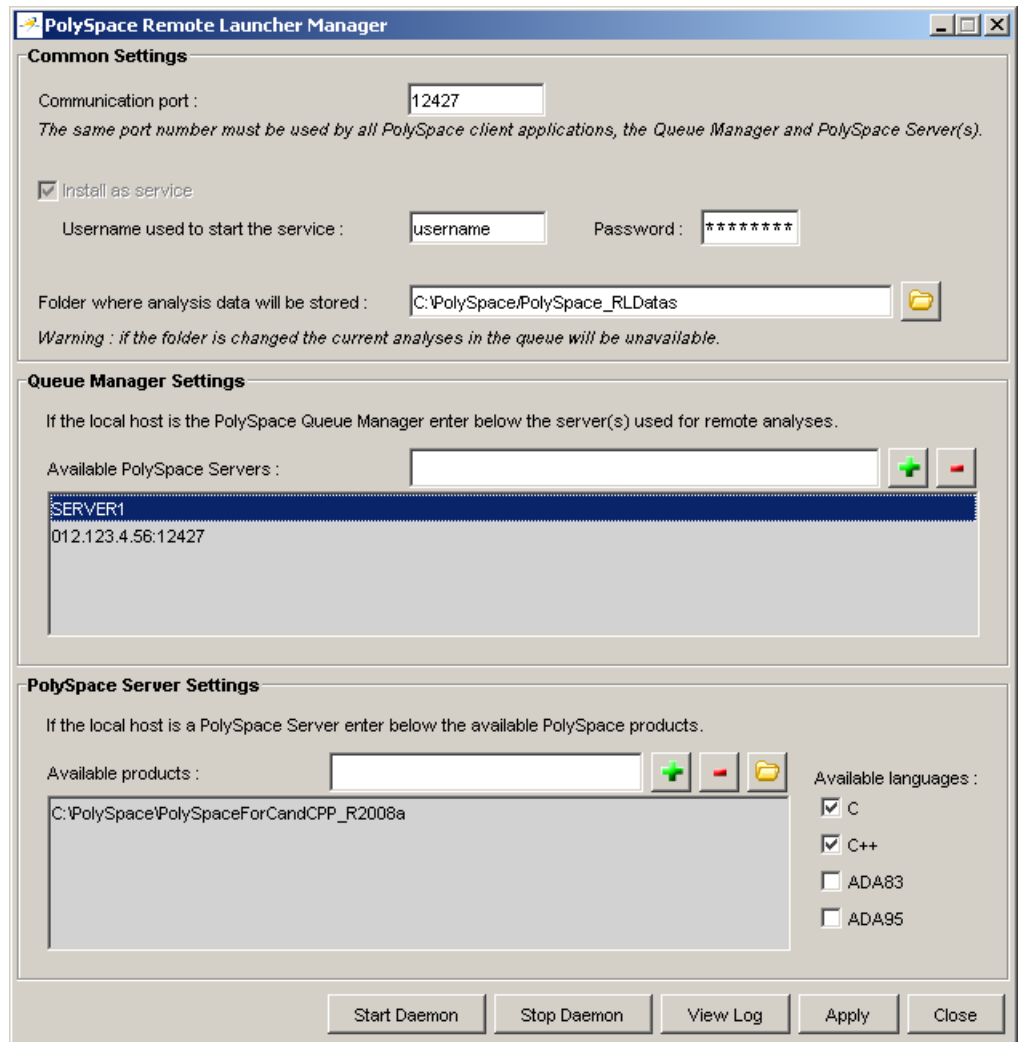
---

### Graphical Configuration of the PolySpace™ Server

A configuration of the Server, Queue Manager of the Client/Server architecture has been stored in a standard file. A default configuration is generated during the installation: the current machine is at the same time the Queue Manager, and the distant machine.

The Queue Manager can be configured or updated graphically (on Windows systems) or using a shell command using a graphical user interface:

The “Remote Launcher Manager” command is accessible using the menu **Start > Programs > PolySpace** or the exe command *PolySpaceInstallCommon/RemoteLauncher/PSTRManager.exe* allows to configure and update the Queue Manager and associated polyspace.conf file.



The “Common Settings” dialog allows setting port and locations of the Queue Manager as a Windows service. Note that it is mandatory to stop the current Queue Manager before any change or update of the parameters. Please use first the “Stop Daemon” button.

The “Queue Manager Settings” allows setting the address of the Queue Manager and all attached CPU of the Remote Launcher. The syntax “<describing name/IP address>[:<port number>]” attaches a CPU.

In the previous figure, “SERVER1” is the Queue Manager and “012.123.4.56:12427” represents a CPU with a specific port number.

The last sub-window “PolySpace Server Settings” allows setting PolySpace products locations and language.

---

**Note** All information displayed during the execution of commands like “Start Daemon”, “Stop Daemon” are also written in the `polyspaced.logfile` in `<PolySpaceInstallCommon>/../PolySpace_RLDatas(/var/PolySpace under UNIX)`.

---

### Manual Configuration of the PolySpace™ Server

A configuration of the Server/Verifier, Queue Manager of the Client/Server architecture has been stored in a standard file. A default configuration is generated during the installation: the current machine is at the same time the Queue Manager, and the distant machine.

The batch command

`PolySpaceInstallCommon/RemoteLauncher/bin/setup-remote-launcher` can be used to create or destroy the configuration file. It is called `polyspace.conf`. It may be found:

- For administrator or user on a Windows OS system  
at: `PolySpaceInstallCommon/ ../PolySpace_RLDatas`  
(`c:\PolySpace\PolySpace_RLDatas`)
- For administrator or user on a UNIX OS system: `/etc/PolySpace`

The configuration file contains fields which set a Queue Manager and CPU architecture:

- `product=` — It determines the installation directories of PolySpace Verifier. It is possible to have one per language.



- `lang=` — It determines the supported verification languages. The language variable specifies the supported language declaration (CPU only). The values may be: C, C++, CPP, Ada, Ada83, ADA, Ada95 and ADA95.
- `username=` — . The username variable specifies the user name used to run the daemon process. If the daemon is started as root on UNIX, it will automatically change its user ID to run as the given user.
- `datadir=` — The data directory name identifies the place where the data sent remotely are stored.
- `locksdir=` — The locks directory identifies the place where the locks are stored. `<datadir>/locks` will be used by default without specified field.
- `port=` — The port number on which the daemon is listening (default value is 12427). The available port can be specified between 10000 to 15000. This range depends on the available OS requirements.
- `cpu=` — The CPU name and port specifies available Queue Manager and CPUs. Syntax can be `<address IP or name of CPU>[:port number]`. If more than one `cpu=` is specified, others are CPUs where the Queue Manager can dispatch verifications.

Any change in the configuration file except for the `cpu=` field (for example, to add a new CPU, see next paragraph), the associated daemon/service manager need to be stopped and re started:

- `PolySpaceInstallCommon/RemoteLauncher/bin/setup-remote-launcher -stop-service` is used to stop the service. Note that any standard program on OS can stop the service or daemon.
- `PolySpaceInstallCommon/RemoteLauncher/bin/setup-remote-launcher -start-service` is used to start or restart the service. Note that any standard program associated to the OS can restart the service or daemon.

---

**Note** `PolySpaceInstallCommon/RemoteLauncher/bin/setup-remote-launcher -h` gives available options

---

If the Queue Manager has not been ticked to be a service (daemon) during installation, the following command allows to launch and stop the Queue Manager by hand:

- Use `PolySpaceInstallCommon/RemoteLauncher/bin/InstallPolySpaceService.bat` to install the Queue manager service on a Windows platform.

---

**Note** The Windows service can also be managed like other services using the **My Computer > Manage > Services and Applications** menu.

---

- Use `PolySpaceInstallCommon/RemoteLauncher/bin/setup-remote-launcher -install-service` to install the Queue manager daemon on a UNIX platform.

---

**Note** The PolySpace daemon can also be managed like other daemon in the `/etc/init.d` install services directory.

---

The `polyspaced` is the service (or daemon) launched using the previous commands:

- Use `PolySpaceInstallCommon/RemoteLauncher/bin/polyspaced -stop` to stop the Queue Manager.
- Use `PolySpaceInstallCommon/RemoteLauncher/bin/polyspaced` to start or restart the Queue Manager.

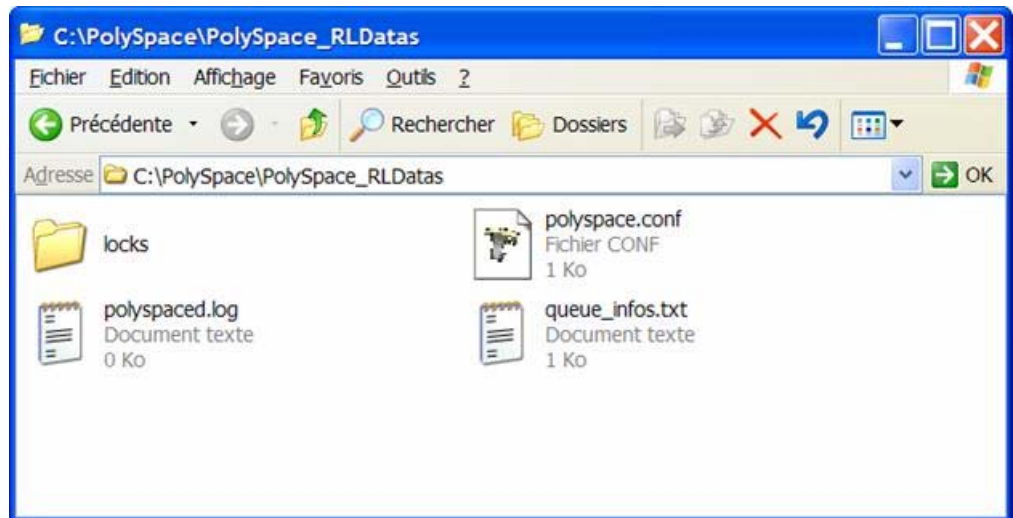
---

**Note** `<PolySpaceInstallCommon>/RemoteLauncher/bin/polyspaced -h` gives available options.

---

### Configuration File and Directory

We can find in the `<PolySpaceInstallCommon>/../PolySpace_RLData` directory the following files and directories:



- The `polyspaced.log` file contains installation log information as well as all communication between clients and the Queue Manager during the Queue Manager life.
- The `queue_infos.txt` file contains information of the Queue Manager spooler.
- The `locks` directory contains the locks file for each verification.
- `polyspace.conf` is the configuration file. An example of a Server/Verifier `polyspace.conf` configuration file looks like this:

```
product=c:\PolySpace\PolySpaceForCandCPP
product=c:\PolySpace\PolySpaceForAda
lang=Ada95
lang=C
lang=CPP
datadir=c:\PolySpace\PolySpace_RLData
username=bard
cpu=BERGERON
cpu=192.168.2.79:12428
```

In this example, the BERGERON cpu has been configured to be a Queue Manager and a CPU of C, CPP and Ada95 analyses on default port 12427. The product

installed in `c:\PolySpace\PolySpaceForCandCPP` will be used. Moreover, another CPU of address IP `192.168.2.79` has been declared on port `12428`.

On a UNIX system, the directory location containing locks and `datadir` by default is `/var/PolySpace`.

### Installing a New CPU

Installing a new CPU is very simple: just follow the standard PolySpace Server installation. Then, edit the `polyspace.conf` of the CPU which has been chosen as Queue Manager, and add the new CPU using the field `cpu=<describing name/IP address>[:<port number>]`

See the following example where there are two declared CPUs.

```
product=c:\PolySpace\PolySpaceForCandCPP
product=c:\PolySpace\PolySpaceForAda
lang=Ada95
lang=C
lang=CPP
datadir=c:\PolySpace\PolySpace_RLDatas
username=bard
cpu=BERGERON
cpu=192.168.2.79:12428
```

---

**Note** On the new CPU, it is important to remove the field `cpu=` in the `polyspace.conf` file to avoid being also a “Queue Manager”.

---

### Troubleshooting Common Errors

This section contains information on troubleshooting the following common errors:

- “Errors Concerning the `polyspace.conf` File” on page 2-27
- “Errors Concerning Problems with Write Access” on page 2-28
- “Other Errors” on page 2-28

**Errors Concerning the polyspace.conf File.** If you receive any of the following errors:

- 1 Stop the polyspacedservice (daemon).
- 2 Update the polyspace.conf file.
- 3 Restart the service (daemon).

The following errors concern the polyspace.conf file.

- "Error: The data directory path should not contain white space.";
- "Error: At least one language should be supported by the CPU.";
- "<polyspace.conf>:<line\_number>: Duplicate entry for product <version value>.";
- "<polyspace.conf>:<line\_number>: Unknown language : <value>.";
- "<polyspace.conf>:<line\_number>: Duplicate entry for language <value>.";
- "<polyspace.conf>:<line\_number>: Duplicate entry for <queuemanager name>.";
- "<polyspace.conf>:<line\_number>: Duplicate entry for <value>.";
- "<polyspace.conf>:<line\_number>: Duplicate entry for username'.";
- "<polyspace.conf>:<line\_number>: Duplicate entry for 'port'.";
- "<polyspace.conf>:<line\_number>: Invalid port number : <value>";
- "<polyspace.conf>:<line\_number>: Invalid CPU name.";
- "<polyspace.conf>:<line\_number>: Duplicate entry for CPU <hostname> ";

- "<polyspace.conf>:<line\_number>: Unknown key : <value> ";
- "<polyspace.conf>:<line\_number>: Parse error.";
- "No PolySpace product found for language <value>.";
- "Warning: Invalid <lang> license for product <version> on host <hostname> ";
- "The PolySpace product <version> was not found.";

**Errors Concerning Problems with Write Access.** If you receive any of the following errors, check right accesses with username declared in the polyspace.conf file in the directory <dir>, <file name> or <path> (given in the error message).

Check also that you have not changed anything linked to “polyspaced” service (daemon) without stopping it.

- "Fatal error: Directory <dir> is not accessible.";
- "Fatal error: Could not change the owner of <path> to <username> ";
- "Fatal error: Could not open file <file name> for reading.";
- "Fatal error: Could not set <permission> permissions on <path> ";
- "Fatal error: Could not open file <file name>";

**Other Errors.** Other errors may concern OS system, network and standard command available (for example “tar”, “gzip”, etc.).

Double check that these standard commands exist in your system. Error messages are detailed enough to know which command has failed.

# Installing PolySpace™ Model Link Products

---

Installing PolySpace™ Model Link  
Products (p. 3-2)

Describes how to install PolySpace™  
Model Link™ SL or PolySpace Model  
Link TL

Upgrading MATLAB® Software  
(p. 3-5)

Describes how to re-install PolySpace  
Model Link SL after upgrading  
MATLAB®

Troubleshooting PolySpace™ Model  
Link™ SL Installation (p. 3-6)

Describes alternative installation  
options if you have trouble with the  
standard installation

# Installing PolySpace™ Model Link Products

The PolySpace™ Model Link™ SL and PolySpace Model Link TL provide automatic error detection for code generated from The MathWorks™ Simulink® models.

PolySpace Model Link SL installation consists of two components:

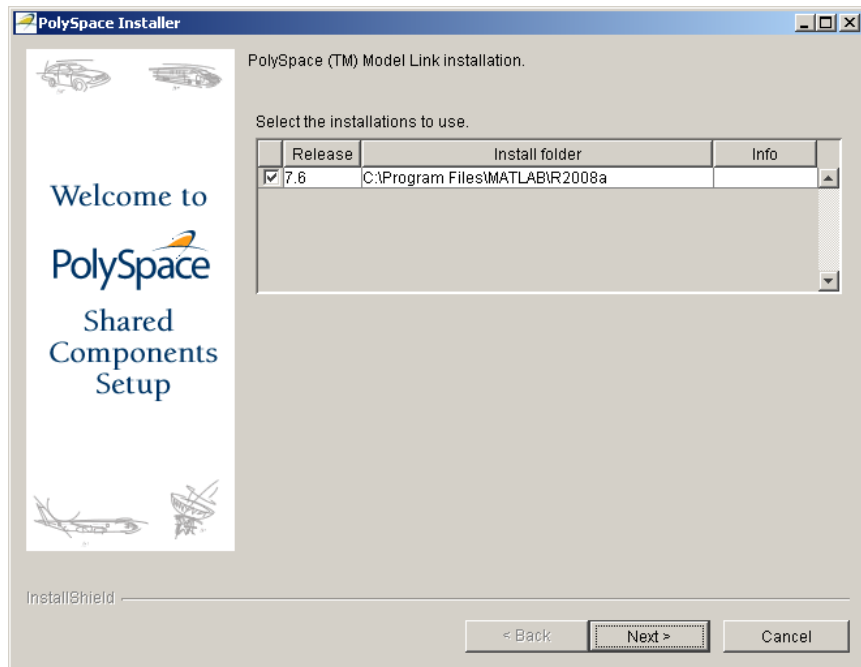
- Simulink PolySpace library with associated blocks
- “Back to model” (HTML links in the code source) extension in the PolySpace Viewer that allows direct navigation from a run-time error in the auto-generated code to the corresponding block in the Simulink model.

To install PolySpace Model Link SL:

- 1 Install the PolySpace software as described earlier in this guide.

The PolySpace Installer automatically detects that MATLAB® and Simulink components are installed and displays the following window:





**2** Select the one or more code generators.

The installer copies a PolySpace sub-directory into each version of MATLAB you select.

---

**Note** The original contents of the PolySpace sub-directory can be found in the *PolySpaceInstallCommon\PolySpaceModelLink* directory.

---

---

**Note** On Windows 64-bit systems, the MATLAB installation is not detected, so the Model Link software is not automatically installed. You must manually install the Model Link software by copying the following files from the CD:

- \Data\Windows\Addin\Mathworks\polyspace\\* to  
  /*PolySpace\_Common*/*PolySpaceModelLink*
- \Data\Windows\Addin\Mathworks\startup\polyspacerc.m to  
  *matlabroot*\toolbox\local\

Then, edit *matlabroot*\toolbox\local\matlabrc.m, and add a call to *polyspacerc* at the end of the file.

---

## Upgrading MATLAB® Software

If you upgrade your MATLAB® release, you must re-install PolySpace™ Model Link™ SL or PolySpace Model Link TL for that release.

You can re-install PolySpace Model Link SL without using the installation CD.

To reinstall:

- 1** Copy the file *Polyspace\_Common*\PolySpaceModelLink\startup\polyspacerc.m into your new MATLAB release *matlabroot(new)*\toolbox\local.
- 2** Enter `edit matlabrc` in the MATLAB command window.
- 3** Go to the end of the file, and add the following lines:

```
%% POLYSPACE CONFIGURATION
polyspacerc;
%% END OF POLYSPACE CONFIGURATION
```
- 4** Run MATLAB in the “regserver” mode, to post-install your MATLAB release on the local machine.
- 5** Run the following command line: `C:\matlabroot(new)>>\bin\matlab.bat /regserver /r quit.`

## Troubleshooting PolySpace™ Model Link™ SL Installation

### In this section...

“MATLAB® Software is Not Installed Locally” on page 3-6

“No Write Access to MATLAB® Product Root” on page 3-7

### **MATLAB® Software is Not Installed Locally**

If MATLAB® is not installed locally, the registry entries do not contain reference to MATLAB, which PolySpace™ uses to detect installation folders. In this case, the PolySpace installer will not detect MATLAB, and will skip installation of the PolySpace Model Link tools. Therefore, you must perform a manual installation.

To perform a manual installation:

- 1** Insert the PolySpace CD in your CD drive.
- 2** Locate the corresponding windows drive (hereafter D:\), and copy the entire folder `D:\Data\Windows\Addin\Mathworks\polyspace` into `PolySpace_Common\PolySpaceModelLink`.
- 3** Copy the file `D:\Data\Windows\Addin\Mathworks\startup\polyspacerc` into `matlabroot\toolbox\local`.
- 4** Edit `matlabroot\toolbox\local\matlabrc`, and add the following lines at the end of the file:

```
%% POLYSPACE CONFIGURATION
polyspacerc;
%% END OF POLYSPACE CONFIGURATION
```

- 5** Run MATLAB once in the “regserver” mode, to post-install your MATLAB release on the local machine.
- 6** Run the following command line: `C:\matlabroot\bin\matlab.bat /regserver /r quit`

## No Write Access to MATLAB® Product Root

If the installer detects that there is no write access to *matlabroot*, it asks you if you want to add a desktop shortcut to start MATLAB and configure the PolySpace Model Link software.

- If you select **Yes**, a shortcut is added to your desktop. Double-click the shortcut to execute `matlabroot\bin\win32\matlab.exe /r polyspacerc`. This command starts MATLAB and automatically configures the PolySpace Model Link software.
- If you select **No**, the installer will describe how to manually configure PolySpace Model Link software



# Installing PolySpace™ UML Link™ RH (C and C++ Only)

---

Installing PolySpace™ UML Link™  
RH Product (p. 4-2)

Describes how to install PolySpace™  
UML Link™ RH

# Installing PolySpace™ UML Link™ RH Product

The PolySpace™ UML Link™ RH product provides an addin inside the Model-Driven development tool Rhapsody®. It concerns the installation of two components:

- PolySpace library
- “Back to model” extension (HTML link inside the code) in the PolySpace Viewer that allows direct navigation from a run-time error in the auto-generated code to the corresponding block in the UML model.

The PolySpace Installer automatically detects that Rhapsody components are installed and installs PolySpace UML Link RH during the “Shared components” installation.

If you install the Rhapsody software after installing PolySpace software, you can either re-install the PolySpace software or manually copy the plug-in files from the CD to */PolySpace\_Common/PolySpaceModelLink/*.

By default, a *PolySpaceInstallCommon/PolySpaceUMLLink* is created where we can find all the components of PolySpace UML Link RH. Moreover, the PolySpace installer modifies two files associated with the Rhapsody usage:

- A line in the rhapsody.ini file located at the root of C:, or in C:\WINNT:  
`CopyVBA=PolySpaceInstallCommon\PolySpaceUMLLink\bin\PolySpace.vba`

where *PolySpaceInstallCommon* represents the path to the PolySpace\_Common directory.

- Some lines are added to the *RhapsodyInstallDir\Share\Properties\site.prp*:

```
Subject General
Metaclass Model
Property HelpersFile String "PolySpaceInstallCommon\
PolySpaceUMLLink\etc\PolySpace.hep"
End
```



# Upgrading PolySpace™ Software

---

Upgrading PolySpace™ Client  
Products (p. 5-2)

Describes how to upgrade the  
PolySpace™ Client software

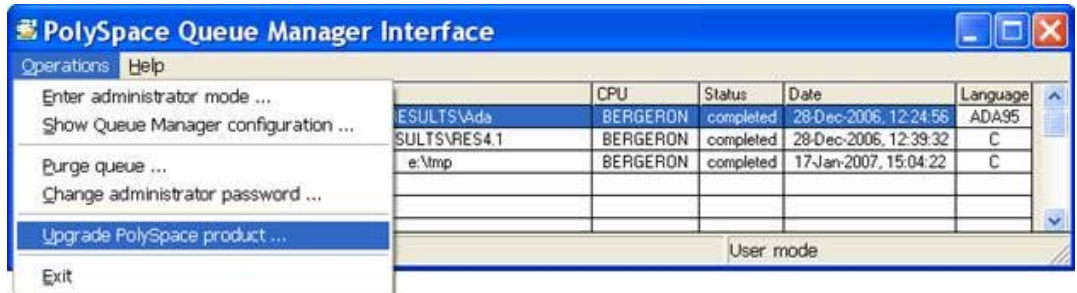
Upgrading PolySpace™ Server  
Products (p. 5-4)

Describes how to upgrade to a new  
release on a PolySpace Server or a  
CPU

## Upgrading PolySpace™ Client Products

When the remote launcher has been installed, The Queue Manager interface (or PolySpace™ Spooler) is available to manage verifications sent by a PolySpace Client.

The **Menu Operations > Upgrade PolySpace Product** allows the upgrade of a PolySpace Client.



On the Server side, in the *PolySpaceInstallCommon/./PolySpace\_RLDatas/upgrades* directory (/var/PolySpace/upgrades on UNIX®) a new release of a product has been installed with the following format: <version>.tar or <version>.tar.gz. If such file in the upgrades directory exists, it is possible to upgrade the PolySpace client:




---

**Note** The tar file needs to contain the setup.exe at his root.

---

After having chosen options (installation directory and silent modes), the “PolySpace Queue Manager Interface” downloads the complete setup package (approximately 600 Mb) and unpacks it. It could take several minutes to download and unpack (5 to 10), depending of network and Desktop PC performances. Then, a standard installation begins. Note that it is recommended to close all PolySpace Products, if they are open.

## Upgrading PolySpace™ Server Products

In this section...
“Overview” on page 5-4
“Upgrading an Active Server” on page 5-4
“Upgrading an Inactive Server” on page 5-4

### Overview

When you are upgrading the PolySpace™ software on a Server, you need to determine if the PolySpace Server daemon is active or not (whether a daemon is running and one or more verifications are queued and running on CPUs).

### Upgrading an Active Server

To upgrade an active server:

- Perform the Client upgrade procedure in “Upgrading PolySpace™ Client Products” on page 5-2.
- After the installation completes, open the PolySpace Remote Launcher Manager to configure the server. For more information, see “Configuring the PolySpace™ Server Software” on page 2-19

### Upgrading an Inactive Server

On an inactive server (a machine without an installed daemon or without any verifications queued and running), you can choose the PolySpace **Server** installation. The field “product=” will be filled in an automatic way. You must only add the lang= if it does not already exist.

Do not forget to update the polyspace.conf of the PolySpace Server which serves as a Queue Manager, i.e. by adding a new entry cpu=.

---

**Note** You can install different releases of a same product language. The PolySpace Server will automatically lead verifications coming from different client releases to adequate CPU and associated PolySpace release product.

---

# Installing PolySpace™ C++ addin for Visual Studio®

---

Installing PolySpace™ C++ addin  
for Visual Studio® (p. 6-2)

Describes how to install PolySpace™  
C++ addin for Visual Studio®

## **Installing PolySpace™ C++ addin for Visual Studio®**

The PolySpace™ installer automatically detects that Visual Studio® is installed and installs the addin during the “Shared Components” installation.

When a PolySpace™ Client™ for C/C++ is already installed before you install Visual Studio, you must reinstall the PolySpace software from the CD.

# Uninstalling PolySpace™ Products

---

Uninstalling on Windows® Platforms  
(p. 7-2)

Describes how to uninstall  
PolySpace™ software on Windows®  
platforms

Uninstalling on Linux® or UNIX®  
Platforms (p. 7-4)

Describes how to uninstall PolySpace  
software on Linux® or UNIX®  
platforms

## Uninstalling on Windows® Platforms

In this section...
“Uninstalling the PolySpace™ Software” on page 7-2
“Uninstalling Shared Components” on page 7-2

### Uninstalling the PolySpace™ Software

You can uninstall the PolySpace™ software through the standard interface available on a Windows® PC.

To uninstall the PolySpace software:

- 1** From the Windows desktop, select *Start > Settings > Control Panel > Add or Remove Programs*.
- 2** Select the PolySpace product you want to uninstall.
- 3** Select **Change/Remove**.

The un-installation procedure goes through steps. Please follow the instructions and refer to paragraphs below for specifics components, if necessary.

---

**Note** Some files and folders added after installation can remain after the uninstall process is complete. After reboot, check the *PolySpaceInstallDir* and *PolySpaceInstallCommon* folders for remaining files and subfolders. You can remove these files by hand.

---

### Uninstalling Shared Components

You can also uninstall specific shared components.

To uninstall PolySpace shared components:

- 1** From the Windows desktop, select *Start > Settings > Control Panel > Add or Remove Programs*.



**2** Select **PolySpace Shared Components**.

**3** Select **Change/Remove**.

The shared components are removed.

# Uninstalling on Linux® or UNIX® Platforms

In this section...
“Uninstalling the PolySpace™ Software” on page 7-4
“Uninstalling Shared Components” on page 7-4

## Uninstalling the PolySpace™ Software

To un-install components under Linux® or UNIX® system:

- Enter *PolySpaceInstallDir*/\_uninst/uninstall.

This script launches the graphical uninstall wizard.

## Uninstalling Shared Components

You can also uninstall specific shared components.

To uninstall PolySpace™ shared components:

- 1 Enter *PolySpaceInstallCommon*/\_uninst/uninstall

The shared components are uninstalled.

## C

### CD-ROM

- contents 1-7

### Client

- description 1-10

- installing 2-4

- overview 2-2

### client software

- configuring 2-17

### client/server

- architecture 1-10

### configuration

- troubleshooting 2-26

### configuring

- client software 2-11 2-17

- manually 2-17

- server software 2-19

### CPU 1-10

- installing new 2-26

## D

### directories

- installation 1-12

- required 1-12

### documentation

- requirements 1-5

## E

### errors

- troubleshooting 2-26

## H

### hardware

- requirements 1-2

## I

### icons

- after installation 2-14

### installation

- architecture 1-10

- directories 1-12

- options 1-10

- starting 1-8 2-4 2-15

### installing

- PolySpace Model Link SL 3-2

- PolySpace Model Link TL 3-2

## L

### license

- options 1-4

### licensing

- client software 2-11

### LINUX

- requirements 1-5

## M

### MATLAB

- reinstalling PolySpace after upgrade 3-5

### model link

- installing 3-2

## P

### PolySpace

- architecture 1-10

### PolySpace C++ addin for Visual Studio 6-2

### PolySpace Client

- description 1-10

- installing 2-4

- overview 2-2

### PolySpace Client software

- configuring 2-17

### PolySpace Model Link SL 3-1

- troubleshooting 3-6

### PolySpace Model Link TL 3-1

### PolySpace Server

- description 1-10
- overview 2-2
- PolySpace Server software
  - configuring 2-19
- PolySpace UML link RH
  - installing 4-2
- PolySpace UML Link RH 4-1

## R

- requirements
  - access rights 2-4
  - hardware 1-2
  - license 1-4
  - polyspace plug-ins 1-3
  - polyspace products 1-2
  - software 1-2
  - UNIX/LINUX 1-5

## S

- Server
  - description 1-10
  - overview 2-2
- server configuration
  - graphical 2-19
  - manual 2-22
  - troubleshooting 2-26
- server software
  - configuring 2-19
- silent mode
  - installing 2-15
- Simulink
  - installing PolySpace Model Link SL 3-2

- software
  - requirements 1-2

## T

- terminology 1-10
- timing 1-6
- troubleshooting
  - PolySpace Model Link SL installation 3-6
  - server configuration 2-26

## U

- UML link
  - installing 4-2
- uninstalling
  - on UNIX 7-4
  - on Windows 7-2
- UNIX
  - installing on 2-15
  - requirements 1-5
- upgrading
  - PolySpace software 5-1

## V

- visual studio
  - installing addin 6-2

## W

- wizard
  - starting 1-8 2-4 2-15